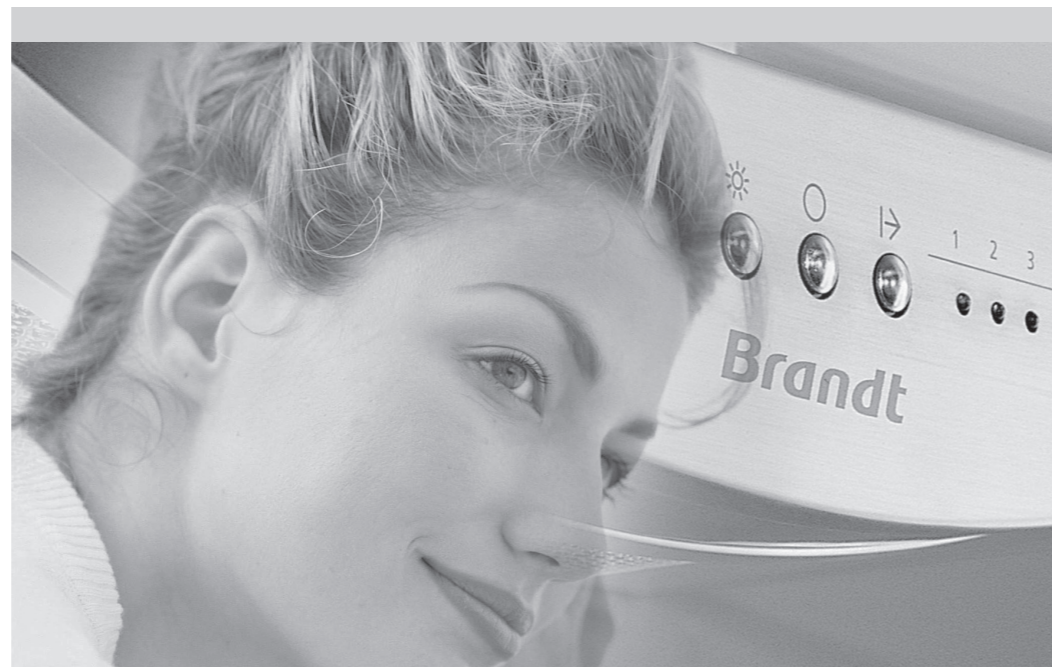
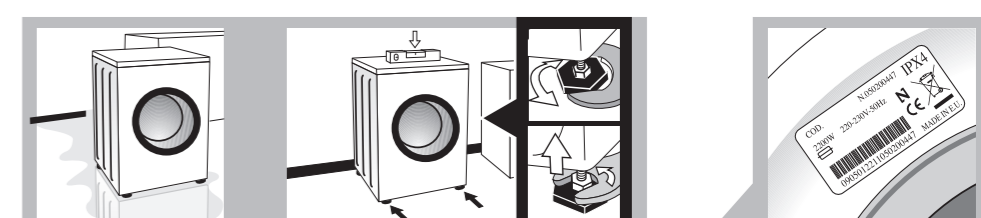
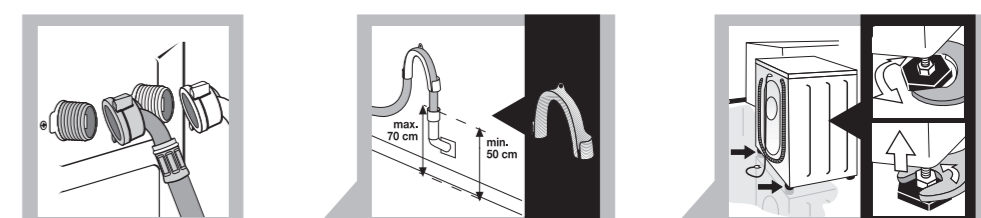
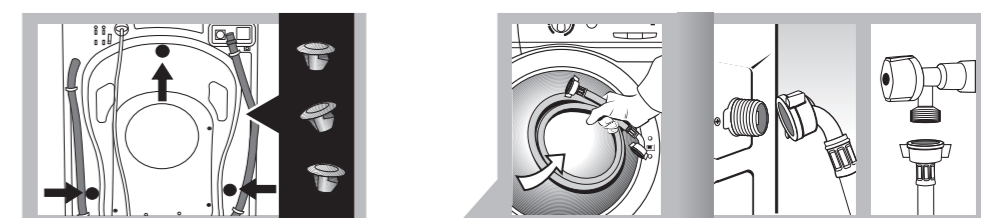
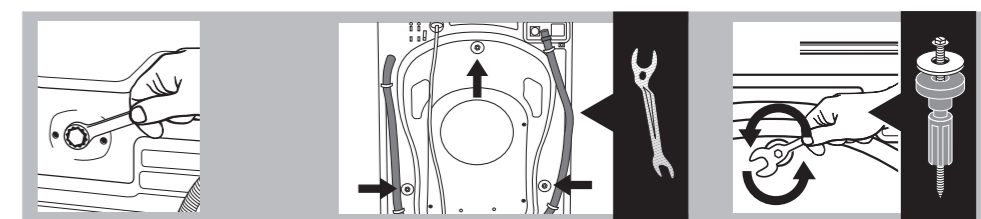
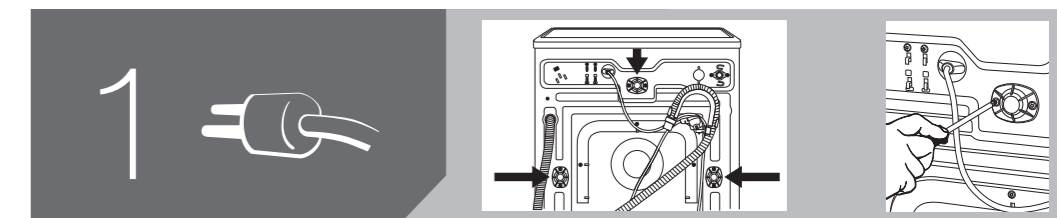
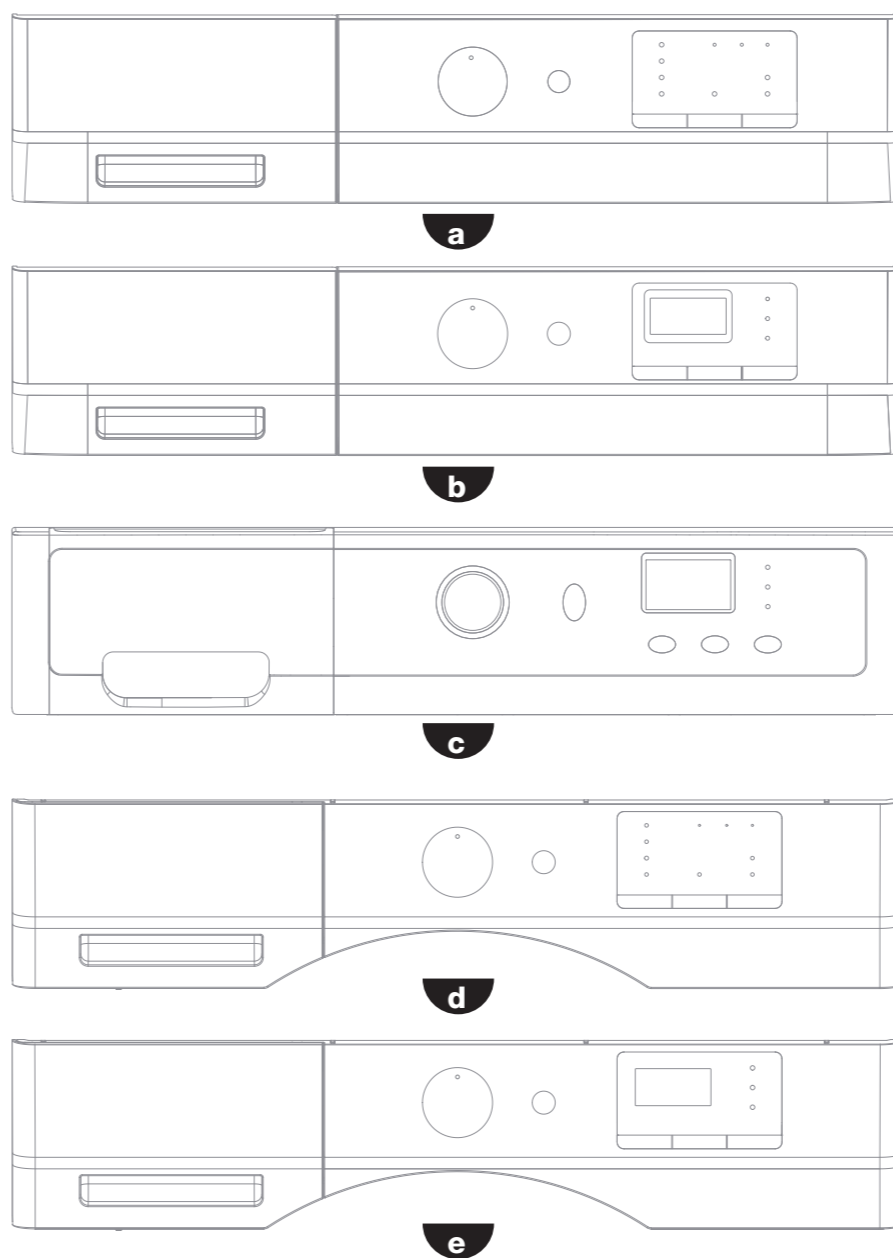


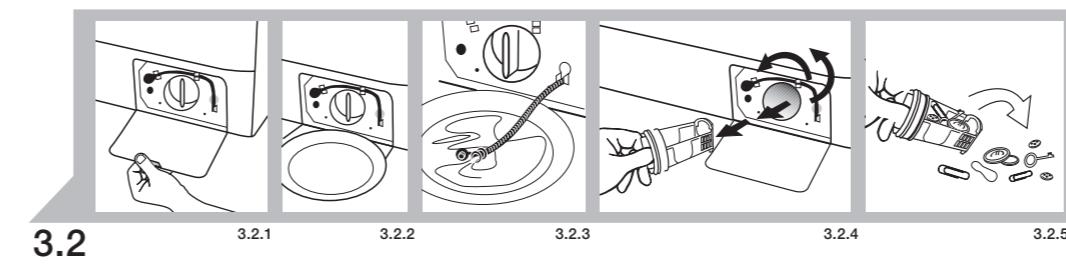
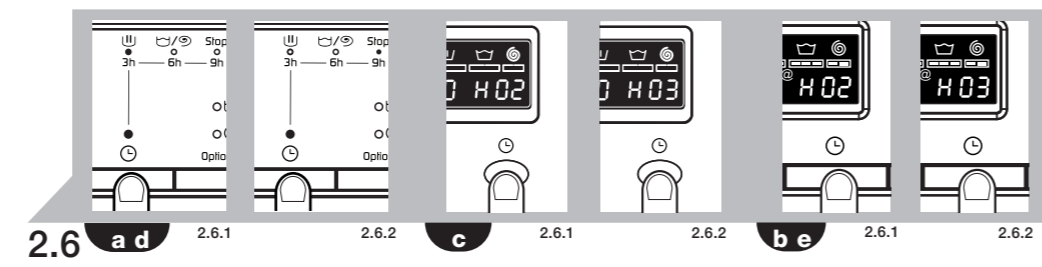
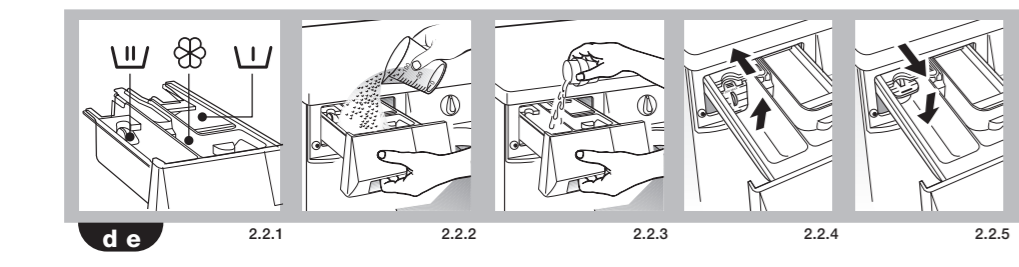
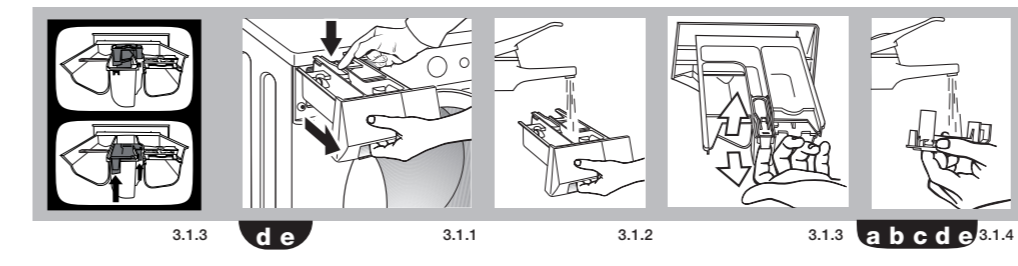
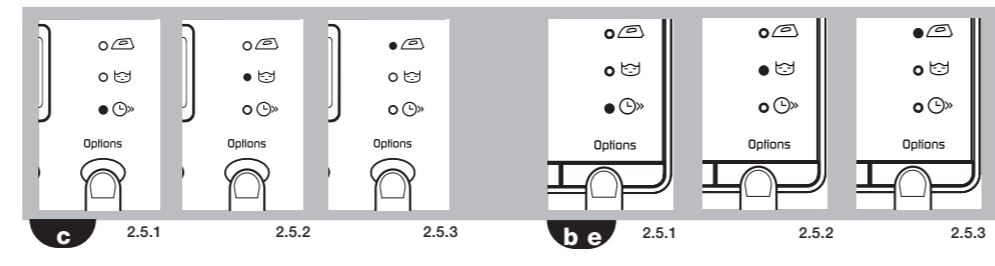
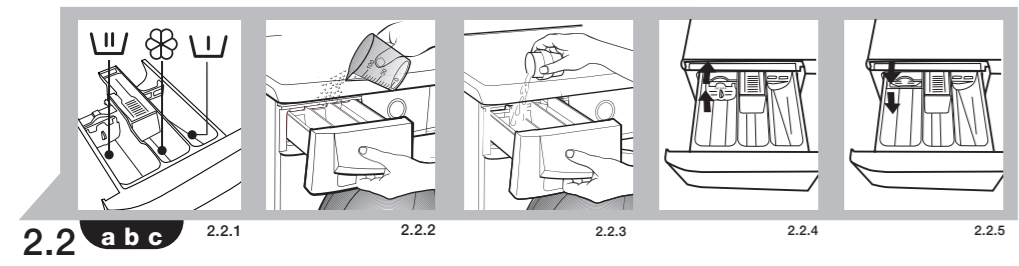
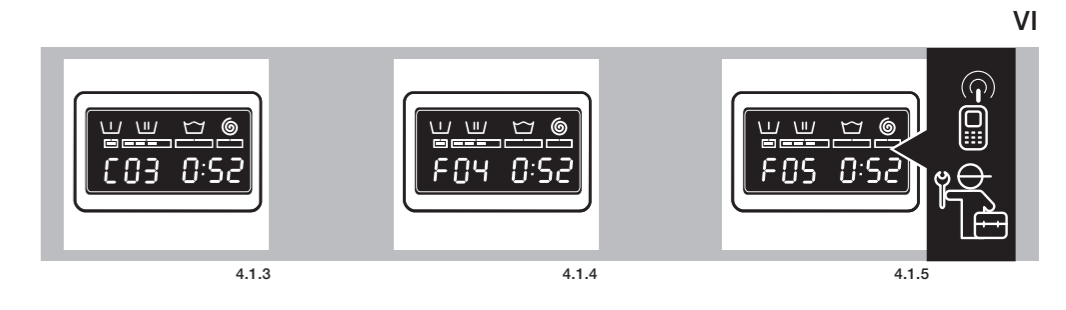
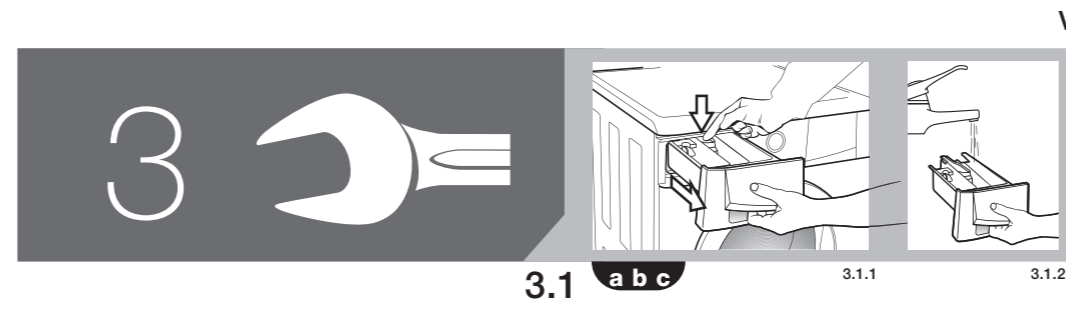
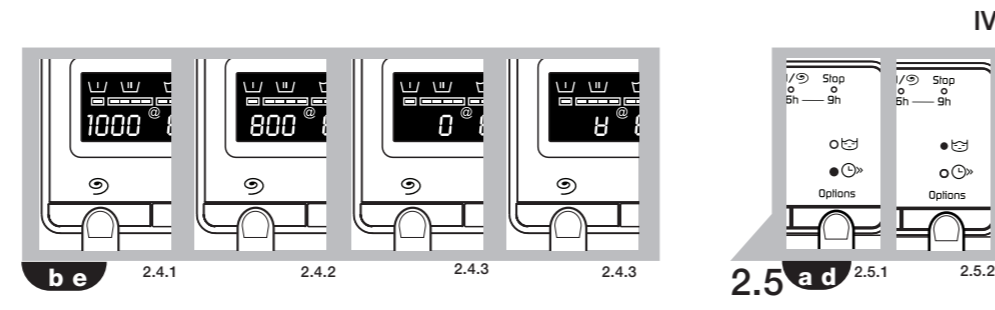
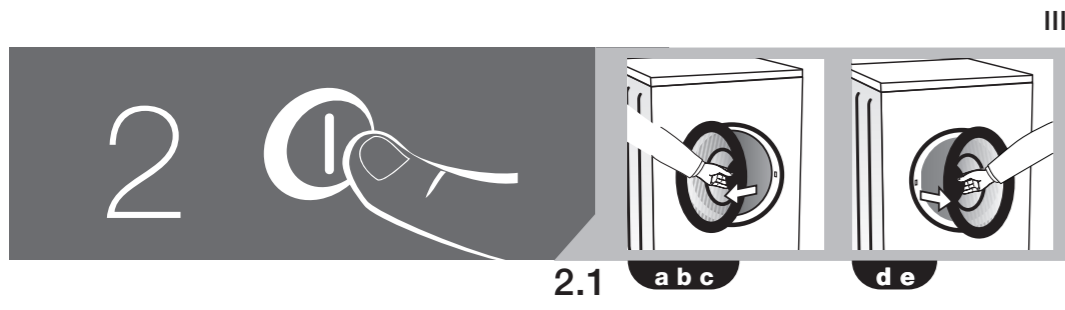
# Brandt



- |                            |                                       |
|----------------------------|---------------------------------------|
| EN INSTRUCTION MANUAL      | PT MANUAL DE INSTRUÇÕES               |
| FR MANUEL D'UTILISATION    | EL Εγχειρίδιο οδηγιών                 |
| ES MANUAL DE INSTRUCCIONES | CS NÁVOD K OBSLUZE A INSTALACI PRAČKY |
| DE BEDIENUNGSANLEITUNG     | RU ИНСТРУКЦИЯ ПО ЭКСПЛУАТАЦИИ         |
| NL INSTRUCTIEHANDLEIDING   | DA BRUGERVEJLEDNING                   |
| IT MANUALE DI ISTRUZIONI   | AR دليل الاستخدام                     |

Service fourni par FagorBrandt SAS, locataire-gérant, Etablissement de Cergy,  
5/7 avenue des Béthunes, 95310 Saint Ouen l'Aumône SAS au capital social de 20.000.000 euros  
RCS Nanterre 440 303 196





English	1
Français	5
Español	9
Deutsch	13
Nederlands	17
Italiano	21
Português	25
ελληνικά	29
Česky	33
Русский	37
Dansk	41
عربية	45

